

FREE

*Break through
your brick walls
with the...*



Federation's Really Useful Leaflet

2021 Edition

*Your guide to the
Federation, Family History Societies
and much more*

Provided free by the Family History Federation

www.familyhistoryfederation.com



@FederationFHS



FederationFHS



**If you do nothing else today...
make sure that you...**

JOIN A FAMILY HISTORY SOCIETY

Join the Society nearest to where you live for:

- ⇒ Meeting friendly, like-minded people;
- ⇒ Sharing your research challenges and successes;
- ⇒ Help, support and advice;
- ⇒ Opportunity to attend lectures, discussions and much more!

Join the Society where your ancestors came from for:

- ⇒ Local help and advice—local societies are THE experts;
- ⇒ Contacting others researching the same family;
- ⇒ Discovering unusual or local resources;
- ⇒ Access to the society's own speciality indexes and resources.

**See the Federation's website for current details
of member societies and how to contact them:**

www.familyhistoryfederation.com



About the Family History Federation

Family History Federation (FHF) is the working name of the Federation of Family History Societies, an educational charity. FHF represents, advises and supports the membership, which consists of family history societies and similar bodies across the world.

To achieve its mission, the FHF:

- promotes interest, among the public, in researching family history and encourages membership of the Federation's member societies
- promotes, facilitates and assists the work of member societies
- supports and encourages mutual cooperation and collaborative projects to help relevant research
- represents the interests of the members and family historians in general.

Membership of FHF is open to any society or body specialising in family history or an associated discipline.

The Federation makes representations to official bodies on matters affecting the study of family history and related topics, as well as regularly liaising with a number of government bodies and archives. The Federation therefore provides an authentic, audible and respected voice for the many thousands of individual family historians.

Education is a vital activity for the Federation. This is achieved through regular meetings and discussions conducted by member societies and through courses on family history organised around the world, as well as through publication of the *Really Useful Leaflet*.

Family History Federation

Postal address: PO Box 62, Sheringham, NR26 9AR, England

Email: admin@familyhistoryfederation.com

Telephone: +44 (0)1263 824951

'Family History Federation', 'Family History Books' and 'Parish Chest' are brand names used by the Federation of Family History Societies.

Registered Charity No: 1038721. Company No: 2930189 (England)

Registered office: 2 Primrose Avenue, Urmston, Manchester M41 0TY, England

Copyright © 2021 Federation of Family History Societies. All rights reserved.



For those with a Smartphone, this symbol provides easy access to extras on the FHF website. Download a free QR reader from your app store and scan the code to go to the Home Page at www.familyhistoryfederation.com/

Welcome

Welcome to the *Really Useful Leaflet*—the Family History Federation’s answer to your family history challenges. We’re really happy that it’s never been easier to research your family heritage. Indeed, using widely advertised online resources it is often possible to grow your tree right back to the early 1800s in just a few hours.

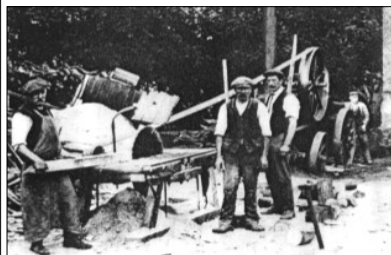
But at times it’s not so easy. Where do you go for help if the information you need is harder to find than you thought? How do you reach back beyond 1800? What if you want to learn about your ancestors’ lives and the places they lived so you can better understand them?

In this edition of the *Really Useful Leaflet* we highlight resources which could help answer many questions:

- ◇ Family history societies and other organisations plus their websites
- ◇ Websites for resources—many being free of charge
- ◇ The FHF website at **www.familyhistoryfederation.com** where you will find the Federation wiki with many help sheets and free downloads.



The Family History Federation (FHF) has a membership of over 170 organisations, including local, regional, national, international, specialist and one-name groups. All include people with a passion for family history research frequently backed up with many years of research experience and expertise. Most are delighted to welcome



new members, share their knowledge and make research suggestions for you to pursue. Additionally, they usually know of hard-to-find resources tucked away in local collections.

Joining a FHF member society costs typically £10-£20 a year—a small investment which could save you huge amounts in both time and money.

You might want to join your local society in order to benefit from their local knowledge and expertise. You could also consider joining a group where your family lived or originated. Membership of a one-name or special interest organisation may also prove beneficial.

**Need to kick-start your research, or break through a brick wall?
Join a family history society or group TODAY!**

*This booklet contains links to websites that are not managed by FHF.
FHF does not exercise any control over those websites, and therefore is not
responsible for their content or their quality.*

FHF Member Societies

'A society's strength lies in its local and specialist knowledge'
This list correct at going to print. Please check website for new additions.
Please visit each member society's website for full information.

UK, CHANNEL ISLANDS & IRELAND

AIREDALE & WHARFEDALE FAMILY HISTORY SOCIETY

<https://awfhs.org/>

One of Yorkshire's societies. Founded as Wharfedale FHG in 1980, and combined in 2019 with Keighley & District FHS.

ALDE VALLEY FAMILY HISTORY GROUP

www.https://avsfhg.org.uk

www.facebook.com/groups/avsfhg

A dynamic group based in East Suffolk, England. Please see website for full details and a downloadable index.

ANGLO-ITALIAN FAMILY HISTORY SOCIETY

www.anglo-italianfhs.org.uk

www.facebook.com/groups/208530689162140/

The society for those whose Italian forebears migrated to or passed through the United Kingdom.

ANGLO-SCOTTISH FAMILY HISTORY SOCIETY

<https://www.mlfhs.uk/anglo-scots>

<https://www.facebook.com/angloscotshs/>

We help researchers trace their Scottish origins, and manage a databases of Scots. Meetings held in Manchester.

ASSOCIATION OF GENEALOGISTS & RESEARCHERS IN ARCHIVES (AGRA), THE

www.agra.org.uk

<https://twitter.com/AGRAGenealogy>

AGRA is not a research organisation but represents highly-qualified and experienced independent professional genealogists.

BARNSELY FAMILY HISTORY SOCIETY

www.barnsleyfhs.co.uk

A friendly society, established in 1986, to support the family historian who wishes to research Barnsley and district of Yorkshire.

BEDFORDSHIRE FAMILY HISTORY SOCIETY

www.bfhs.org.uk/

[www.facebook.com/](https://www.facebook.com/bedfordshireFamilyHistorySociety/)

[bedfordshireFamilyHistorySociety/](https://www.facebook.com/bedfordshireFamilyHistorySociety/)

The Society was formed in 1977 to encourage the study of family history, genealogy and heraldry, primarily within the county of Bedfordshire.

BRADFORD FAMILY HISTORY SOCIETY

www.bradfordfhs.org.uk

[www.facebook.com/](https://www.facebook.com/groups/1425861784383338/)

[groups/1425861784383338/](https://www.facebook.com/groups/1425861784383338/)

Founded in 1982, this Yorkshire society promotes family history by education, mutual assistance, demonstrations, and other means conducive to its advancement.

BRISTOL & AVON FAMILY HISTORY SOCIETY

www.bafhs.org.uk/

www.facebook.com/bristolandavonFHS

The society provides advice and guidance at national, local and regional events, and undertakes local transcription projects.

BRITISH ASSOCIATION FOR CEMETERIES IN SOUTH ASIA

www.bacsa.org.uk

<https://www.facebook.com/bacsa.org.uk>

Founded in 1977 to help conserve British burial grounds in South Asia. We fund projects and record memorials.

BRITISH ASSOCIATION FOR LOCAL HISTORY

www.balh.org.uk/

www.facebook.com/BALHNews

BALH is the umbrella society for individuals interested in the local history of their ancestors, as well as local history societies

BUCKINGHAMSHIRE FAMILY HISTORY SOCIETY

www.bucksfhs.org.uk

www.facebook.com/bucksfhs/

Formed in 1976 to encourage and promote the study of family history whether with Bucks ancestry and residents researching elsewhere.

Join your local Society!

BURNWOOD FAMILY HISTORY GROUP

www.bfhg.org.uk

A small group that has achieved much since foundation in 1986. Operates in the area around Cannock-Lichfield in south Staffordshire.

CALDERDALE FAMILY HISTORY SOCIETY

www.cfhsweb.com

www.facebook.com/calderdalefhs/

Calderdale FHS covers the ancient Yorkshire parish of Halifax with the addition of the townships of Todmorden and Walsden.

CAMBRIDGESHIRE & HUNTINGDONSHIRE FAMILY HISTORY SOCIETY

www.cfhs.org.uk

www.facebook.com/cambridgeshirefhs

A welcoming society with a wealth of local knowledge and experience. Founded as Cambridgeshire FHS, expanded to include Huntingdonshire.

CARDIGANSHIRE FAMILY HISTORY SOCIETY

Cymdeithas Hanes Teuluoedd Ceredigion

www.cgnfhs.org.uk/index.htm

www.facebook.com/cardiganshire-family-historysociety-280266565349115

The Society was formed in 1995 to encourage the study of genealogy and family history in Cardiganshire by those having family connections with the county.

CARIBBEAN FAMILY HISTORY GROUP

<https://caribbeanfamilyhistorygroup.org>

www.facebook.com/Caribbean-Family-History-493376417348462/

Formed in 2008 to encourage research into Caribbean family history. Regular meetings in Solihull, often with research themes.

CATHOLIC FAMILY HISTORY SOCIETY

<http://catholicfhs.online>

www.facebook.com/CatholicFHS

The society encourages research in Catholic ancestry in Great Britain. See website for publications, guidance and transcription downloads for members.

CESTRIA U3A

<https://u3asites.org.uk/cestria/page/17019>

Operating in Chester-le-Street, County Durham, our goal is to meet as a group in order to improve our research skills in genealogy and social history.

CHANNEL ISLANDS FAMILY HISTORY SOCIETY

www.jerseyfamilyhistory.org

www.facebook.com/JerseyFHS/

Formed in 1978 and based in Jersey, the society's area includes all the Channel Islands. Membership has grown steadily with many living overseas.

CHESHIRE, THE FAMILY HISTORY SOCIETY OF

www.fhsc.org.uk

www.facebook.com/CheshireFamilyHistory/

Founded in 1969 to advance the study of family history and genealogy. Well-stocked research centre. Local groups meet throughout Cheshire.

CHESTERFIELD & DISTRICT FAMILY HISTORY SOCIETY

www.cadfhfs.org

www.facebook.com/groups/1748408198777885/

Covering north-east Derbyshire, providing a strong base to enable members to develop and grow as family history researchers.

CITY OF YORK & DISTRICT FAMILY HISTORY SOCIETY

www.yorkfamilyhistory.org.uk

www.facebook.com/YorkFHS/

Founded in 1975 to further interest in family history research, the Society covers the modern Archdeaconry of York.

CLEVELAND FAMILY HISTORY SOCIETY

www.clevelandfhs.org.uk

Cleveland FHS, founded in 1980, provides a service for family historians in the old county of Cleveland plus south parts of County Durham and North Yorkshire.

CLWYD FAMILY HISTORY SOCIETY

Cymdeithas Hanes Teuluoedd Clwyd

www.clwydfhs.org.uk

www.facebook.com/groups/CFHSociety/

Founded in 1980 the Society covers North East Wales including the historic counties of Denbigh, Flint and the Edeirnion area around Corwen.

CORNWALL FAMILY HISTORY SOCIETY

www.cornwallfhs.com

www.facebook.com/CornwallFHS/

Since its beginning in 1976, the society has aimed to become a centre of excellence by encouraging Cornish family history research.

COVENTRY FAMILY HISTORY SOCIETY

www.covfhs.org.uk

The society for those with Coventry ancestors and for genealogy enthusiasts living in the city. Lots to see on our website. Warwickshire.

CUMBRIA FAMILY HISTORY SOCIETY

www.cumbriafhs.com

www.facebook.com/groups/241982616155568/

Covering the modern county of Cumbria, which is the old counties of Cumberland and Westmorland plus a part of Northern Lancashire and North Yorkshire.

DERBYSHIRE FAMILY HISTORY SOCIETY

www.dfhs.org.uk

www.facebook.com/DerbyshireFHS/

The society brings together the knowledge of our experienced volunteers and a specialist library. The website gives access to various datasets.

DEVON FAMILY HISTORY SOCIETY

www.devonfhs.org.uk

www.facebook.com/groups/devonfhs

Looking for Devon ancestors? Check out our website for many members' benefits. The society's strength lies in its local and specialist knowledge.

DISS FAMILY HISTORY GROUP

www.diss-fhg.net

Diss is near the border of north Suffolk with Norfolk. The group, independent since 2019, encourages research and enjoyment of family, local and social history.

DONCASTER & DISTRICT FAMILY HISTORY SOCIETY

www.doncasterfhs.co.uk

www.facebook.com/doncaster-district-family-history-society-691950160885846

Doncaster Archdeaconry is our large geographic area with over sixty parishes. Welcoming reception.

DORSET FAMILY HISTORY SOCIETY

www.dorsetfhs.org.uk

www.facebook.com/Dorset-Family-History-Society-248122705332476/

We are specialists in Dorset ancestry. Wherever your ancestors lived and wherever you live, we will do our best to assist you in your research.

DYFED FAMILY HISTORY SOCIETY

Cymdeithas Hanes Teuluol Dyfed

www.dyfedfhs.org.uk

www.facebook.com/Dyfed-Family-History-Society-251206381728511/

The society serves anyone interested in genealogy, heraldry, family or local history in the counties of Cardigan (Ceredigion), Carmarthen (Sir Gaerfyrddin) and Pembroke (Sir Benfro).

EASTBOURNE & DISTRICT FAMILY HISTORY SOCIETY

www.eastbournefhs.org.uk

www.facebook.com/Family-Roots-100057493150249

Family Roots was founded in 1986 to promote and encourage the study of family history and genealogy with particular reference to Eastbourne, Sussex.

EAST OF LONDON FAMILY HISTORY SOCIETY

www.eolfhs.org.uk

www.facebook.com/pg/eolfhs/groups/417997282266348/

Founded in 1978, the society encourages the study of family history, genealogy, cultural heritage, heraldry and local history in the eastern area of Greater London.

EAST SURREY FAMILY HISTORY SOCIETY

www.eastsurreyfhs.org.uk

www.facebook.com/ESFHS

Since 1977, the society has been helping members trace their family history whether they have connections to the East Surrey area or elsewhere.

EAST YORKSHIRE FAMILY HISTORY SOCIETY

www.eyfhs.org.uk

www.facebook.com/eastyorkshirefhs/

Formed in February 1977, since when the society has gone from strength to strength. Regular meetings in Beverley, Hull, Bridlington and Scarborough.

ESSEX SOCIETY FOR FAMILY HISTORY

www.esfh.org.uk

www.facebook.com/esfh1/

ESFH publishes a journal; holds monthly meetings; has a Research Centre; has extensive Essex Genealogical Database in members-only area of the website.

FAMILIES IN BRITISH INDIA SOCIETY

www.fibis.org

www.facebook.com/fibis.org

Many Britons have ancestors in British India. The society's website offers around two million free biographical records. Research advice is available to members.

FAMILY & COMMUNITY HISTORICAL RESEARCH SOCIETY

www.fachrs.com

www.facebook.com/FACHRSoc/

Take your British ancestors beyond the tree! Find out how your ancestors lived in their community. Join – find out more!

FAMILY HISTORY RESEARCH GROUP

A family history group based in Liphook, Hampshire. *Society profile awaited.*

FELIXSTOWE FAMILY HISTORY SOCIETY

www.felixstowefhs.onesuffolk.net

Felixstowe is situated on the south east coast of Suffolk. The society helps researchers to increase their knowledge of genealogy and assists in their research.

FENLAND FAMILY HISTORY SOCIETY

www.fenlandfhs.org.uk

<https://www.facebook.com/groups/471696882981515>

Fenland comprises the former Isle of Ely, parts of South Lincolnshire and West Norfolk. Formed in 2001 to encourage the study of family, local and social history.

FOLKESTONE & DISTRICT FAMILY HISTORY SOCIETY

www.folkfhs.org.uk

www.facebook.com/groups/1449172685386502/

Founded in 1976 to encourage the study of family history in the South East Kent area, it provides assistance to members with ancestry anywhere.

FURNESS FAMILY HISTORY SOCIETY

www.furnessfhs.co.uk

Furness is "Lancashire-beyond-the-Sands" bound by the sea on the south, Cartmel and Windermere, the River Duddon and the Langdale valleys.

Remember to check the website or Facebook page for the Society in your home area as well as that where your forebears lived.

GLAMORGAN FAMILY HISTORY SOCIETY

Cymdeithas Hanes Teuluol Morgannwg

www.glamfhs.org.uk

www.facebook.com/groups/glamorganfhs/
The society, founded in 1974, acts as a focal point for all with Glamorgan roots.

GLOUCESTERSHIRE FAMILY HISTORY SOCIETY

www.gfhs.org.uk

www.facebook.com/GloUCEstershireFHS

Whether your ancestors came from the Severn Vale, the Cotswolds, the Forest of Dean or other parts of the UK, we can help with your research.

GUERNESIAISE, LA SOCIETE

<https://societe.org.gg/wp/family-history/>

<https://www.facebook.com/LaSocieteGuernesiaise/>

The family history section was founded in 1987 to support family history research in the Island of Guernsey.

GWENT FAMILY HISTORY SOCIETY

Cymdeithas Hanes Teuluoedd Gwent

www.gwentfhs.org.uk

www.facebook.com/groups/gwentfhs/

The society, formed in 1981 in the Welsh county of Gwent, provides the key to roots in the ancient county of Monmouth.

GWYNEDD FAMILY HISTORY SOCIETY

Cymdeithas Hanes Teuluoedd Gwynedd

www.gwyneddfhs.co.uk

www.facebook.com/groups/890997484341191/

Founded in 1980 to promote the study of genealogy, heraldry, local and family history in the historical counties of Anglesey, Caernarfon and Merioneth.

HAMPSHIRE GENEALOGICAL SOCIETY

www.hgs-familyhistory.com

<https://www.facebook.com/HGSfamilyhistory/>

Our aim is to help you trace your family's Hampshire roots. We have been encouraging the study of family history research since our formation in 1974.

HARROGATE AND DISTRICT FAMILY HISTORY SOCIETY

www.hadfhs.co.uk

Independent since 2006, specialising in the study of family and local history in Harrogate and district of Yorkshire.

HASTINGS & ROTHER FAMILY HISTORY SOCIETY

www.hrfhs.org.uk

Formed in 1986 to encourage the research of family history in the historical area of Hastings & Rother in East Sussex, which includes many local parishes.

HERALDRY SOCIETY, THE

www.theheraldrysociety.com

www.facebook.com/theheraldrysociety/

A registered charity, the society exists to increase and extend interest in and knowledge of heraldry, armory, chivalry, genealogy and allied subjects.

HEREFORDSHIRE FAMILY HISTORY SOCIETY

www.herefordshirefhs.org.uk

[www.facebook.com/groups/](https://www.facebook.com/groups/HerefordshireFamilyHistorySociety/)

[HerefordshireFamilyHistorySociety/](https://www.facebook.com/groups/HerefordshireFamilyHistorySociety/)

Family history society covering the county of Herefordshire. Quarterly journal; monthly meetings in Hereford.

HERTFORDSHIRE FAMILY HISTORY SOCIETY

www.hertsfhs.org.uk

[www.facebook.com/](https://www.facebook.com/HertfordshireFamilyHistorySociety/)

[HertfordshireFamilyHistorySociety/](https://www.facebook.com/HertfordshireFamilyHistorySociety/)

The society was founded in 1977 with a brief to educate and inform the public about genealogy with focus on the county.

HILLINGDON FAMILY HISTORY SOCIETY

www.hfhs.org.uk

Established in 1987 to promote family history and genealogy and celebrate Hillingdon's past. Hillingdon is on the western edge of Greater London.

HUDDERSFIELD & DISTRICT FAMILY HISTORY SOCIETY

www.hdfhs.org.uk

[www.facebook.com/](https://www.facebook.com/huddersfieldfamilyhistory)

[huddersfieldfamilyhistory](https://www.facebook.com/huddersfieldfamilyhistory)

The society covers the Yorkshire towns of Huddersfield, Dewsbury, Batley, Holmfirth and surrounding areas.

HUGENOT SOCIETY OF BRITAIN & IRELAND, THE

www.huguenotsociety.org.uk

The society was formed in 1885, the bicentenary of the Revocation of the Edict of Nantes. Its objects are the study of the French Protestant Refugee diaspora.

INSTITUTE OF HERALDIC & GENEALOGICAL STUDIES

www.ihgs.ac.uk

www.facebook.com/THEIHGS

IHGS – The School of Family History, established in 1961, is dedicated to family history and heraldry education and research. See website for courses available.

IRELAND, GENEALOGICAL SOCIETY OF

<https://familyhistory.ie/wp/>

www.facebook.com/familyhistory.ie/

Founded in 1990, and expanded in 1999, the society promotes the study of genealogy, heraldry, vexillology, one-name studies and social history.

IRISH FAMILY HISTORY SOCIETY

<https://ifhs.ie/>

[www.facebook.com/](https://www.facebook.com/groups/190491718359749/)

[groups/190491718359749/](https://www.facebook.com/groups/190491718359749/)

IFHS, established in 1984, is based in Ireland. Membership is open to all interested in tracing their Irish roots.

IRISH GENEALOGICAL RESEARCH SOCIETY, THE

www.irishancestors.ie

[www.facebook.com/](https://www.facebook.com/IrishGenealogicalResearchSociety/)

[IrishGenealogicalResearchSociety/](https://www.facebook.com/IrishGenealogicalResearchSociety/)

A learned society founded in 1936 with the to establish a collection of relevant documents in its London library .

ISLE OF MAN FAMILY HISTORY SOCIETY

www.iomfhs.im/

[www.facebook.com/](https://www.facebook.com/groups/466196900237509/)

[groups/466196900237509/](https://www.facebook.com/groups/466196900237509/)

Formed in 1979 to encourage the study of genealogy and family history, particularly within the Isle of Man.

ISLE OF WIGHT FAMILY HISTORY SOCIETY

www.isle-of-wight-fhs.co.uk

www.facebook.com/groups/iw.fhs/

Membership includes quarterly journals and access to website members' area. The Society has a resource centre in Cowes. The island lies off the south coast of England.

JEWISH GENEALOGICAL SOCIETY OF GREAT BRITAIN

www.jgs.gb.org.uk

www.facebook.com/groups/JGSGB/

The JGSGB encourages genealogical research; promotes the preservation of Jewish genealogical records; and shares information amongst members.

KENT FAMILY HISTORY SOCIETY

www.kfhs.org.uk

[www.facebook.com/](https://www.facebook.com/KentFamilyHistorySociety)

[KentFamilyHistorySociety](https://www.facebook.com/KentFamilyHistorySociety)

Six branches. Free help sessions. Members' benefits include: quarterly journal; online-shop discounts; surname search; online forum; library.

LANCASHIRE FAMILY HISTORY & HERALDRY SOCIETY

www.lfhhs.org.uk

www.facebook.com/LFHHSOnline

An active society with a worldwide membership. Holds meetings in 12 centres. Help for members through email forum and various other services.

LANCASHIRE PARISH REGISTER SOCIETY

www.lprs.org.uk

The society, founded 1898, publishes parish records, dating from the 16th century.

Many registers include precious additional information about residence or occupation.

LANCASTER & DISTRICT FAMILY HISTORY GROUP

www.lfhg.org

<https://www.facebook.com/Lancaster-District-Family-History-Group-125977358798949/>

Formed in 1991 as a self-help group which found many others also wanted to take part. There is a regular newsletter to keep members near and far informed.

LEICESTERSHIRE & RUTLAND FAMILY HISTORY SOCIETY

<https://lrfhs.org.uk/>

www.facebook.com/LeicsRutFHS/

We are a friendly society, serving the counties of Leicester & Rutland. We operate from our Research Centre in Leicester.

LETCHEWORTH & DISTRICT FAMILY HISTORY SOCIETY

www.ldfhg.org.uk

[https://www.facebook.com/](https://www.facebook.com/LetchworthFamilyHistory/)

[LetchworthFamilyHistory/](https://www.facebook.com/LetchworthFamilyHistory/)

Founded in 1995 by an enthusiastic group of family historians in Hertfordshire with world-wide interests.

LINCOLNSHIRE FAMILY HISTORY SOCIETY

www.lincolnshirefhs.org.uk

[www.facebook.com/](https://www.facebook.com/LincolnshireFamilyHistorySociety/)

[LincolnshireFamilyHistorySociety/](https://www.facebook.com/LincolnshireFamilyHistorySociety/)

The Society was formed in 1990 and covers Holland, Kesteven and Lindsey – the three parts of the ancient county of Lincolnshire.

LIVERPOOL AND SOUTH WEST LANCASHIRE FAMILY HISTORY SOCIETY

<http://lswlfhs.org.uk/>

www.facebook.com/LandSWLFHS/

A welcoming society with a wealth of experience. 'You'll never walk alone' in your quest for that elusive ancestor.

LONDON GROUP OF YORKSHIRE FHS

<https://yorkslondongroup.tumblr.com>

We are a small group providing opportunity for members of Yorkshire societies to meet and attend talks with others interested in the same area.

LONDON, WESTMINSTER & MIDDLESEX FAMILY HISTORY SOCIETY

www.lwmfhs.org.uk

www.facebook.com/LWMFHS

The Society covers the cities of London and Westminster, plus much of Middlesex. Subscription includes website members' interests' database, quarterly journal.

MALVERN (WORCESTERSHIRE) FAMILY HISTORY SOCIETY

www.mfhs.org.uk

We are a group whose members are local to Malvern and Worcestershire, whose roots can be spread far and wide, and those further afield with family links.

MANCHESTER & LANCASHIRE FAMILY HISTORY SOCIETY

<https://mlfhs.uk>

www.facebook.com/MandLFamilyHistory/

MLFHS has been supporting family historians since 1964. Based at Manchester's Central Library with branches in Bolton and Oldham.

MIDLAND ANCESTORS

www.midland-ancestors.uk

[https://www.facebook.com/people/](https://www.facebook.com/people/Midland-Ancestors/100063602049527/)

[Midland-Ancestors/100063602049527/](https://www.facebook.com/people/Midland-Ancestors/100063602049527/)

MA has seven groups in the old counties of Stafford, Warwick, Worcester plus West Midlands. Please visit our website for further information.

Check individual websites for more information.

MID-NORFOLK FAMILY HISTORY SOCIETY

[www.https://mnfhs.org](http://www.mnfhs.org)

The Mid-Norfolk Family History Society was formed in September 1994 and meets in Dereham.

MONTGOMERYSHIRE GENEALOGICAL SOCIETY

Cymdeithas Achyddol Maldwyn

www.montgensoc.org

www.facebook.com/MontGenSoc/

The society helps members trace their Montgomeryshire family histories, plus helping members with family connections in adjacent counties.

MORLEY & DISTRICT FAMILY HISTORY GROUP

www.wakefieldfhs.org.uk/morleyfhg

[www.facebook.com/](https://www.facebook.com/groups/394397257285713/?ref=bookmarks)

[groups/394397257285713/?ref=bookmarks](https://www.facebook.com/groups/394397257285713/?ref=bookmarks)

We are a small group, founded in 1986, and sandwiched in between the Yorkshire towns of Leeds, Bradford and Wakefield

NORFOLK FAMILY HISTORY SOCIETY

www.norfolkfhs.org.uk

[www.facebook.com/groups/](https://www.facebook.com/groups/familyhistorynorfolk)

[familyhistorynorfolk](https://www.facebook.com/groups/familyhistorynorfolk)

Formerly Norfolk & Norwich Genealogical Society - founded in 1968. We have a research centre at Kirby Hall in Norwich.

NORTH MEOLS FAMILY HISTORY SOCIETY

www.nmfhssouthport.co.uk

www.facebook.com/NMFHS.Southport/

A small, friendly society, formed in November 1990 in west Lancashire. The group supports those with an interest in family history and genealogy in the area.

NORTH NORTHUMBERLAND GENEALOGY GROUP

twitter.com/genealogynorth?lang=en

Founded in January 2019, the group focuses on family history and local heritage.

Monthly meetings September - May with talks on genealogical themes.

NORTH OF IRELAND FAMILY HISTORY SOCIETY

www.nifhs.org

www.facebook.com/nifhs

Eleven branches, DNA project, transcriptions, family trees, journal, newsletter. We have a well-stocked library and an email look-up service.

*Remember to visit each website
for full details.*

NORTH WEST KENT FAMILY HISTORY SOCIETY

www.nwkfhs.org.uk

[www.facebook.com/North-West-Kent-](https://www.facebook.com/North-West-Kent-Family-History-Society-185363068176998/)

[Family-History-Society-185363068176998/](https://www.facebook.com/North-West-Kent-Family-History-Society-185363068176998/)
Covering South East London and North West Kent plus the Sussex parishes previously in Tunbridge Wells FHS area.

NORTHAMPTONSHIRE FAMILY HISTORY SOCIETY

www.northants-fhs.org

[www.facebook.com/NorthantsFHS-](https://www.facebook.com/NorthantsFHS-138288449573765)

[138288449573765](https://www.facebook.com/NorthantsFHS-138288449573765)

Meetings at Kettering and Northampton and a help desk at Northamptonshire Archives, plus a quarterly journal and monthly email newsletter.

NORTHUMBERLAND & DURHAM FAMILY HISTORY SOCIETY

www.ndfhs.org.uk

www.facebook.com/FamilyHistorySociety

The society was formed in 1975 to assist researchers, members. Research Centre in Newcastle-upon-Tyne.

NOTTINGHAMSHIRE FAMILY HISTORY SOCIETY

www.nottsfhs.org

The Society has its own Research Room located within the historic National Justice Museum, High Pavement, Nottingham.

NUNEATON & NORTH WARWICKSHIRE FAMILY HISTORY SOCIETY

[www.https://nanwfhs.org.uk](https://www.nanwfhs.org.uk)

www.facebook.com/nnwfhs/

Covers all of North Warwickshire - an area of migration. Many passed through this area. A welcoming group. Why not join?

ORMSKIRK & DISTRICT FAMILY HISTORY SOCIETY

www.odfhs.website

www.boatfamilies.website

[www.facebook.com/](https://www.facebook.com/OrmskirkDistrictFamilyHistorySociety)

[OrmskirkDistrictFamilyHistorySociety](https://www.facebook.com/OrmskirkDistrictFamilyHistorySociety)
Specialising in West Lancashire ancestors. Reference library with specialist records. Free canal families' website (especially Leeds—Liverpool).

OXFORDSHIRE FAMILY HISTORY SOCIETY

www.ofhs.uk

www.facebook.com/oxfordshirefhs

Regular meetings; autumn fair; award-winning journal; help (online, telephone and drop-in) and search services. Members' discussion forum plus access to material.

OXFORDSHIRE RECORD SOCIETY

www.oxfordshire-record-society.org.uk
The Society was founded in 1919 and publishes primary history sources for the historic county of Oxfordshire to raise awareness and understanding.

PEDIGREE USERS GROUP

www.pugweb.org.uk
A group specifically for users of Pedigree or PediTree software. Online wiki and discussion list.

PETERBOROUGH & DISTRICT FAMILY HISTORY SOCIETY

www.peterborofhs.org.uk
www.facebook.com/PeterboroughFamilyHistorySociety
We cover 28 parishes around the city, surrounded by counties of Northampton, Cambridgeshire, Lincoln and Huntingdon.

PONTEFRAC T & DISTRICT FAMILY HISTORY SOCIETY

www.pontefractfhs.org.uk
www.facebook.com/pontefractfhs
Centred on the town of Pontefract in Yorkshire the society covers Pontefract and the surrounding parishes.

POWYS FAMILY HISTORY SOCIETY

Cymdeithas Hanes Teuluoedd Powys
www.powysfhs.org.uk
www.facebook.com/PowysFamilyHistorySociety/
The Society enables research in family, community and local history in Breconshire, Montgomeryshire and Radnorshire.

QUAKER FAMILY HISTORY SOCIETY

[www.https://newtrial.qfhs.co.uk](https://newtrial.qfhs.co.uk)
www.facebook.com/quaker.fhs
The society was formed in 1993. Our aim is to encourage and assist anyone interested in tracing the history of Quaker families in the British Isles and Ireland.

REGISTER OF QUALIFIED GENEALOGISTS

www.qualifiedgenealogists.org
www.facebook.com/RegQualGenes/
Our mission is to improve standards of professional genealogical practice and deliver these improvements to customers for genealogical and family history services.

RODBOURNE COMMUNITY HISTORY GROUP

www.rodbournehistory.org
www.facebook.com/RodbourneCHG
We are committed to recording the rich history of Rodbourne (Wiltshire). We are not just about bricks and mortar, but the people who lived in and made Rodbourne.

ROMANY & TRAVELLER FAMILY HISTORY SOCIETY

www.rtfhs.org.uk
www.facebook.com/pages/Romany-and-Traveller-Family-History-Society-RTFHS/183224701701220
Did your Romany gypsy, traveller or fairground ancestors originate in Britain? Research your roots with the only British society specialising in travelling people.

RUGBY FAMILY HISTORY GROUP

www.rugbyremembers.wordpress.com/rugby-family-history-group/
www.facebook.com/RugbyFamilyHistoryGroup/
Based in the town of Rugby, Warwickshire, we aim to encourage and aid the study of family history in Rugby & surrounding areas.

RYEDALE FAMILY HISTORY GROUP

www.ryedalefamilyhistory.org
www.facebook.com/Ryedale-Family-History-Group-147270825334589/
Our aim is to help members to further their research, not just in the Ryedale area in Yorkshire but wherever ancestors may be.

SCOTLAND: For details of **Scottish societies**, see Scottish Association of Family History Societies (SAFHS) www.safhs.org.uk
See also societies on Parish Chest www.parishchest.com

SELBY & DISTRICT FAMILY HISTORY GROUP

Www.selbydistrictfamilyhistorygroup.blogspot.com
<https://www.facebook.com/SELBYDFH/>
Formed in 2001, and based on the Yorkshire town of Selby we help those living in, or with interests in and around the area.

SHEFFIELD & DISTRICT FAMILY HISTORY SOCIETY

www.sheffieldfhs.org.uk
<https://twitter.com/Sheffieldfhs>
Our focus area is encompassed by the boundaries of the City of Sheffield (Yorkshire) and includes some places that were once in North Derbyshire.

SHROPSHIRE FAMILY HISTORY SOCIETY

www.sfhs.org.uk
www.facebook.com/ShropshireFHS/
Shropshire Family History Society was founded in 1979 and supports family historians researching their Shropshire ancestry wherever they live.

SOMERSET & DORSET FAMILY HISTORY SOCIETY

www.sdfhs.org
www.facebook.com/SomersetDorsetFHS/
We can help you, wherever you live, to research your family history adding local context. Online members' discussion area plus access to datasets.

SOUTH WARWICKSHIRE FAMILY HISTORY SOCIETY

www.swfhs.org.uk
<https://www.facebook.com/pg/swfhs.org.uk/community/>
A website-based group offering information on south Warwickshire parishes.

STEVENAGE FAMILY HISTORY SOCIETY

<http://http://stevenagefhs.epizy.com>
Traditional family history society covering the Stevenage area of Hertfordshire. Founded in 2003.

SUFFOLK FAMILY HISTORY SOCIETY

www.suffolkfhs.co.uk
www.facebook.com/SuffolkFamilyHistorySociety/
A friendly society with branches in Suffolk, and in London. SFHS provides local expertise and regularly issues Suffolk Roots.

SUSSEX FAMILY HISTORY GROUP

www.sfhg.org.uk
www.facebook.com/groups/sussexfhg
We help you research your Sussex ancestors. Membership brings free access to online records, quarterly journal, etc.

TOLLESBURY ANCESTRY GROUP

www.facebook.com/groups/1104938112910002/
A local group operating in Essex.

WAKEFIELD & DISTRICT FAMILY HISTORY SOCIETY

www.wdfhs.co.uk
The Society covers the Wakefield area of Yorkshire, has a quarterly journal and monthly meetings, plus a drop-in help desk.

WALTHAM FOREST FAMILY HISTORY SOCIETY

www.wffhs.org.uk
Founded in 1978 to encourage interest in family history and genealogy. We are a small, friendly society that caters for those in or with south-west Essex ancestry.

WEST MIDDLESEX FAMILY HISTORY SOCIETY

www.west-middlesex-fhs.org.uk
www.facebook.com/westmiddlesexfhs/
Researching your ancestors in West Middlesex? Check our website to see the parishes we cover. Members' access to all our databases AND discounts!

WEST SURREY FAMILY HISTORY SOCIETY

www.wsfhs.co.uk
www.facebook.com/groups/322446563003
Since 1974, we have been transcribing and publishing Surrey records, plus many for London and Middlesex. Full details of all activities, and much more, on the website.

WESTON-SUPER-MARE & DISTRICT FAMILY HISTORY SOCIETY

www.wsmfhs.org.uk
www.facebook.com/groups/225868047988340/
Covering Weston and surrounding parishes in Somerset, visit our website for full details and where members can access transcripts.

WIGAN FAMILY & LOCAL HISTORY SOCIETY

www.wiganworld.co.uk/familyhistory
Our main objective is the promotion and encouragement of research into family and local history in Wigan.

WILTSHIRE FAMILY HISTORY SOCIETY

www.wiltshirefhs.co.uk
www.facebook.com/wiltshirefhs
For everyone with Wiltshire ancestors; advice and research; six local branches. Members' interests, etc on website.

WOOLWICH & DISTRICT FAMILY HISTORY SOCIETY

www.woolwichfhs.org.uk
The society covers Woolwich, Greenwich, Charlton, Plumstead, Eltham, Welling, Bexleyheath and Crayford in south London.

YORKSHIRE ARCHAEOLOGICAL SOCIETY – FAMILY HISTORY SECTION

<https://www.yorkshireroots.org.uk>

If the roots of your family tree are planted firmly in Yorkshire, you should find something to interest you in our society.

ONE-NAME SOCIETIES

ALABASTER SOCIETY, THE

www.alabaster.org.uk

For all with an interest in the family name of ALABASTER. Information on more than 3,000 Alabasters from the present day back to the 15th century!

ALDERSON FAMILY HISTORY SOCIETY

www.afhs.org

www.facebook.com/313660712162983/

A one-name society focussing on ALDERSON and variants and their families – many being traced back to Swaledale in Yorkshire.

World-wide membership.

BERESFORD FAMILY SOCIETY, THE

www.beresfordfamilyociety.org

www.facebook.com/BeresfordFamilySociety/

BeresfordFamilySociety/
For descendants of the Beresford Family worldwide. We link pedigrees and research the origins of the BERESFORD family.

BLISS FAMILY HISTORY SOCIETY

<https://blissfhs.wordpress.com/>

Our mission is to facilitate BLISS genealogical research, celebration of the Bliss name and fellowship with all connected to the name worldwide.

BLO(O)R(E) SOCIETY, THE

www.bloor.org

The Society is an association of those interested in the history and genealogy of Blore, Bloor and Bloore surnames.

BROOKING SOCIETY, THE

www.brookingsociety.org.uk

www.facebook.com/BrookingSociety

We are a family history and genealogy society for all who are related to or are interested in the BROOKING Family.

BUNTING SOCIETY, THE

<http://wordpress.buntingsociety.org.uk/>

[www.facebook.com/](https://www.facebook.com/groups/259794751352054/)

[groups/259794751352054/](https://www.facebook.com/groups/259794751352054/)

One-name society for those with an interest in BUNTING and variants. The society collects and disseminates information about the BUNTING surname.

CAVE FAMILY HISTORY SOCIETY

www.cavefhs.com

www.facebook.com/CaveFHS/

The objective of the Society is to maintain an association of those interested in the origin, history and development of the CAVE family and its variant names.

CHANDLER FAMILY ASSOCIATION

www.chandlerfamilyassociation.org

[www.facebook.com/groups/](https://www.facebook.com/groups/ChandlerFamilyAssociation/)

[ChandlerFamilyAssociation/](https://www.facebook.com/groups/ChandlerFamilyAssociation/)

The association is dedicated to increasing knowledge of the heritage and genealogy of CHANDLERs and descendants worldwide.

CLAN DAVIDSON ASSOCIATION

<https://clandavidson.org.uk/>

[www.facebook.com/Clan-Davidson-](https://www.facebook.com/Clan-Davidson-Association-1997098683908889/)

[Association-1997098683908889/](https://www.facebook.com/Clan-Davidson-Association-1997098683908889/)

A clan organisation for DAVIDSON and all associated surnames. Small museum in the Castle Tulloch Hotel, Dingwall.

COURTENAY SOCIETY, THE

www.courtenaysociety.org

The society, based in Devon, formed 25 years ago to link members of the world wide COURTENAY family. Encourages friendship and help with research.

DALTON GENEALOGICAL SOCIETY, THE

www.daltongenealogy.org

www.facebook.com/daltongenealogical

International one-name society, founded in 1970 with a wealth of information about the huge worldwide DALTON family.

ENTWISTLE FAMILY HISTORY ASSOCIATION

www.entwistlefamily.org.uk

[www.facebook.com/](https://www.facebook.com/EntwistleFamilyHistoryAssociation)

[EntwistleFamilyHistoryAssociation](https://www.facebook.com/EntwistleFamilyHistoryAssociation)

Founded 1999 in Lancashire to bring together ENTWISTLES who wanted to find out more about their family roots.

*Remember to visit each website
for full details.*

KAY FAMILY ASSOCIATION (UK), THE

www.kayfamilyassociationuk.com

[www.facebook.com/](https://www.facebook.com/groups/231865556834696/)

[groups/231865556834696/](https://www.facebook.com/groups/231865556834696/)

The KAY Family Association UK was formed in 1998 to promote interest and encourage research in all aspects of Kay family history.

LEATHER FAMILY HISTORY SOCIETY, THE

The Society collates and disseminates information on the many LEATHER families worldwide. It produces a quarterly journal, Leather Lines. *Profile awaited.*

METCALFE SOCIETY, THE

www.metcalfe.s-online.co.uk

[www.facebook.com/Metcalfe-Society-](https://www.facebook.com/Metcalfe-Society-Official-Page-200053903631/)

[Official-Page-200053903631/](https://www.facebook.com/Metcalfe-Society-Official-Page-200053903631/)

One of the largest one-name societies for all interested in METCALF(E) (and all variants). Join to access 104,000 entries, receive journal and more.

PALGRAVE SOCIETY, THE

http://palgrave.one-name.net/index.php/Main_Page

A one-name society for all with links to the surname PALGRAVE.

RIX FAMILY ALLIANCE

www.fix.one-name.net

The object of the Alliance is to promote and maintain an interest in the history of the RIX/RICKS families through research, discussion and friendly cooperation.

SOLE SOCIETY, THE

www.sole.org.uk

Founded All Souls Day 1991, we are a family history society researching SOLE, SAUL, SEWELL, SOLLEY and similar names. UK plus overseas links.

STONEHEWER TO STANIER SOCIETY, THE

<http://freepages.rootsweb.com/~stanier/genealogy/>

[www.facebook.com/](https://www.facebook.com/StonehewerToStanierSociety)

[StonehewerToStanierSociety](https://www.facebook.com/StonehewerToStanierSociety)

The society combines research into the names STONEHEWER, STONIER, STANIER, STANWAY plus variations, mostly originating in the Cheshire-Staffordshire area.

SURNAME SOCIETY, THE

<https://surname-society.org/>

[www.facebook.com/](https://www.facebook.com/groups/905667519498834/)

[groups/905667519498834/](https://www.facebook.com/groups/905667519498834/)

The Society was launched in 2014 to offer an innovative, collaborative, modern approach to the world of surname studies.

SWINNERTON FAMILY SOCIETY

www.swinnerton.org

[www.facebook.com/](https://www.facebook.com/groups/228619854015060/)

[groups/228619854015060/](https://www.facebook.com/groups/228619854015060/)

The society was founded in 1974 succeeding a correspondence group assembled by the Revd Charles Swynnerton prior to 1923.

WITHERIDGE FAMILY HISTORY SOCIETY

www.witheridgefhs.com

[www.facebook.com/](https://www.facebook.com/groups/2471539919557009/)

[groups/2471539919557009/](https://www.facebook.com/groups/2471539919557009/)

Anyone who is descended from, or related to, any WITHERIDGE or WETHERIDGE is welcome to join our friendly society, which has an international membership.

OVERSEAS MEMBERS**ALBERTA FAMILY HISTORIES SOCIETY**

www.afhs.ab.ca

[Www.facebook.com/AlbertaFHS](https://www.facebook.com/AlbertaFHS)

The society supports worldwide family history research and is based in Calgary where it has a library. Alberta, Canada.

AUSTRALASIAN FEDERATION OF FAMILY HISTORY ORGANISATIONS INC

www.affho.org

Established in 1978 to coordinate and assist the work of Australian and New Zealand groups with interests in family history, genealogy, heraldry etc.

BOTANY BAY FAMILY HISTORY SOCIETY INC

<http://www.botanybayfhs.org.au>

[https://www.facebook.com/Botany-Bay-Family-History-Society-](https://www.facebook.com/Botany-Bay-Family-History-Society-1417759575165335/)

[1417759575165335/](https://www.facebook.com/Botany-Bay-Family-History-Society-1417759575165335/)

Founded in 1984 to provide a meeting place for genealogists and family historians. Our research centre is located in Caringbah, N.S.W., Australia.

Use the links to explore each Family History Society
<https://www.familyhistoryfederation.com/societies-az>

BRITISH ISLES FAMILY HISTORY SOCIETY OF GREATER OTTAWA

www.bifhsgo.ca

www.facebook.com/BIFHSGO/

Founded in 1994, we encourage family history research and its dissemination by people with ancestry in the British Isles.

Located in Ontario, Canada.

FAMILY HISTORY SOCIETY OF NEW ZEALAND INC

www.familyhistorynz.org

www.facebook.com/FamilyHistorySociety-of-NZ-388990381709890/

The society has a library and research centre near Christchurch on the south island of New Zealand.

FAMILY HISTORY WA

www.wags.org.au

www.facebook.com/FamilyHistoryWA

Formed in 1979 to promote, encourage and foster the study of genealogy. Family History WA is the working title of the Western Australia Genealogical Society Inc.

NATIONAL GENEALOGICAL SOCIETY (USA)

Was **FEDERATION OF GENEALOGICAL SOCIETY**

<https://www.ngsgenealogy.org>

<https://www.facebook.com/ngsgenealogy/>

Umbrella organisation for family history, genealogical and similar societies in the U.S.A.. Based in Austin, Texas.

GENEALOGICAL SOCIETY OF QUEENSLAND INC

www.gsq.org.au

<https://www.facebook.com/genealogicalsocietyqld/>

Established as a not-for-profit association in 1978, the society specialises in family history in Queensland, Australia.

GENEALOGICAL SOCIETY OF VICTORIA INC, THE

www.gsv.org.au

<https://www.facebook.com/gsv.org.au/>

Discover a world of family history and be part of a community of members, staff and volunteers dedicated to assisting family history research. Victoria, Australia.

HERALDRY & GENEALOGY SOCIETY OF CANBERRA

www.familyhistoryact.org.au/

www.facebook.com/HAGSOC

The society supports the study and preservation of family history and assists the public in research. ACT, Australia.

INTERNATIONAL SOCIETY FOR BRITISH GENEALOGY AND FAMILY HISTORY (USA)

www.isbgfh.org

www.facebook.com/ISBGFH

Organisation based in Colorado, USA open to all persons in north America interested in British Isles family history research.

NEW ZEALAND SOCIETY OF GENEALOGISTS INC

www.genealogy.org.nz

<https://www.facebook.com/NZSGFRC/>

Established in 1967 to encourage the development of knowledge, skills and practice in family history, genealogy and whakapapa. Branches throughout N.Z.

QUEENSLAND FAMILY HISTORY SOCIETY

www.qfhs.org.au/

www.facebook.com/qldfamilyhistorysociety/

The society provides assistance for anyone tracing their family history. Research centre at Gaythorne, Queensland, Australia.

SOCIETY OF AUSTRALIAN GENEALOGISTS

www.sag.org.au

www.facebook.com/SocAustGen

We've been helping people with their family history for over 85 years, so why not let us help you, too? Sydney, N.S.W., Australia.

SOUTH AUSTRALIAN GENEALOGY AND HERALDRY SOCIETY

Genealogy SA is a resource for family history information in South Australian.

TASMANIAN FAMILY HISTORY SOCIETY INC

www.tasfhs.org

Originally founded as the Genealogical Society of Tasmania in 1980 to promote best practice in family history and provide relevant learning opportunities. Australia.

WAGGA WAGGA & DISTRICT FAMILY HISTORY SOCIETY

www.waggafamilyhistory.org.au

Formed in 1983 to promote the study of family history in the Wagga Wagga and Riverina area, and compile and preserve relevant records. NSW, Australia.

W.I.S.E.

W.I.S.E. Family History Society is dedicated to building community among those who have ancestry in Wales, Ireland, Scotland, and England, and our interests include heraldry, linguistics, emigration and migration, and one-name studies.

Take care of the pennies!

The cost of subscriptions to major online providers coupled with purchases of copy certificates rapidly mount up. Try other sources before flexing the plastic!

Despite some advertising campaigns, all the resources needed to research your tree will never be online, nor will one provider have all that you need. That said, you can work back to the early 1800s – and earlier – using online collections.

Make use of free websites! The *Really Useful Leaflets*'s list has dozens so plunder them! Our list clearly shows £ for those with charges – many of these have free-to-use indexes.

Explore FamilySearch – it has many layers of information along with transcriptions of parish registers and much more.

Check out FreeBMD, FreeCen and FreeReg – transcribed records done by family historians to help others with their research.

Use the General Registrar's website index of births to find the mother's maiden name for all pre-1919 births in England and Wales (FreeBMD had maiden name for post-1911). This will narrow the search for the "right" birth certificate and lead to the "right" marriage.

Many Church of England copy marriage registers are held in county archives. A growing number of archives have contracts with online providers enabling you to download a copy which shows the original signatures made at the wedding. You may be able to access Ancestry or Find My Past in your local library. Also, make use of offers of free access – both FindMyPast and Ancestry provide trial periods; cancel your "subscription" before the payment is due.

There are various datasets for newspapers – your library may have access to the British Newspaper Archive and others – ask what they have! Some libraries provide registered users with access from home.

We all need maps to identify the location of places or check the feasibility of places of the same name that occur in our research. The National Library of Scotland website has free access to all the Ordnance Survey maps for Great Britain.

Before you make any research visit you must contact the repository, check that what you need to use is held on site and will be available on the day you intend to visit. The online catalogue may confirm a collection is held, but it could be off-site or unavailable for other reasons. While visiting, stay over and explore the area where your forebears lived: you could be amazed by what you discover!

And join the local family history society for their knowledge and expertise!



Explore the website—there is much to find!

www.familyhistoryfederation.com

Aide-memoire for writing your memories!

How often have you mentioned “I should record my memories”...and then added “but where do I start?” Everyone has experiences and anecdotes to put on record for those who follow.

What you need is an aide-memoire to get you started!

Make some small cards, and write each of the following topics on individual cards. Shuffle, pick one and write...simple, isn't it? It will get you thinking, the memories will come back and then you can write, or record, your recollections.

- * What is your earliest memory of your mother and/or father?
- * What are your memories of visiting elderly relatives?
- * What is your favourite meal to eat? And which is your favourite meal to cook?
- * What are your memories of shopping – in the market, high street, mail order – or even a mobile shop!
- * Which nursery rhymes and ditties can you remember? Can you write them down?
- * What pets did you or your family have?
- * What was your first job? What were your tasks? What did you wear? What was the boss like?
- * Do you have a story related to a family heirloom or a family hand-me-down?
- * Look at your old photographs: share a memory sparked by each.
- * What memories do you have of family holidays?
- * What was Christmas like in your family? How did you celebrate?
- * What were Sundays like when you were young?
- * What was life like in the area where you lived?
- * The War Years: what are your own memories, or your recollection of your parents' or grandparents' life during the war?
- * What sporting events did you watch or take part in?
- * What place or places are strongly connected to your family?
- * Is there an occupation followed by members of your family?

We are sure you will recall other topics which fit in with your family and your earlier years – but the above should get you started...today!

Thank you to Family Tree magazine for the original food for thought!

Useful Websites

Many of these websites are free to access. The sites that charge to view some or all of their records are followed with a £ symbol.

- **192.com:** People-finder site, including a comprehensive database of current UK residents www.192.com/people £
- **Adoption Search Reunion:** First port of call for anyone searching for, or making contact with, birth and adopted relatives, or researching an adoption that took place in the UK www.adoptionsearchreunion.org.uk
- **Ancestry:** Online access to UK census, GRO indexes, parish registers, and much more: www.ancestry.co.uk £
- **Archives Hub:** Descriptions of archives in over 250 UK universities and colleges; name search facility <https://archiveshub.jisc.ac.uk/>
- **Archives Network Wales:** Information about more than 7,000 collections of historical records in the holdings of 21 archives in Wales archives.wales
- **Army Museums Ogilby Trust:** Details of regimental museums www.armymuseums.org.uk
- **Blind Veterans UK** (formerly St Dunstan's): Holds details of veterans' military service; enquiries by email www.blindveterans.org.uk
- **Borthwick Institute for Archives:** Holds a large number of archives of regional, national and international importance www.york.ac.uk/borthwick
- **British History Online:** Digital library of primary and secondary sources for the history of Britain and Ireland, with a primary focus on the period between 1300 and 1800 www.british-history.ac.uk
- **British Library:** Catalogue of over 12 million books, serials, printed music and maps; newspaper catalogue of over 52,000 newspaper and periodical titles; India Office Select Materials www.bl.uk
- **British Newspaper Archive:** Vast treasure trove of historical newspapers www.britishnewspaperarchive.co.uk £
- **British Postal Museum & Archive:** Online resource of British postal heritage www.postalmuseum.org
- **Children's Homes:** The institutions that became home for Britain's children and young people www.childrenshomes.org.uk
- **Clergy of the Church of England Database:** References to the careers of Anglican clergy from 1540 to 1835; approximately 155,000 clergymen appear <https://theclergydatabase.org.uk/>
- **Commonwealth War Graves Commission:** Debt of Honour Register and online index to CWGC archive www.cwgc.org
- **Connected Histories:** 25 major digital resources for the period 1500–1900 and allows searching of names, places and dates www.connectedhistories.org
- **Cyndi's List:** Long-established genealogical research portal www.cyndislist.com

/more >>>

- **Deceased Online:** UK burial and cremation records www.deceasedonline.com £
- **Ellis Island:** Searchable database and copies of passenger manifests of ships arriving at Ellis Island from 1892–1924 www.libertyellisfoundation.org/passenger
- **FamilySearch:** The LDS Church's worldwide indexes to baptism, marriage and burials, growing number of parish register images, and more www.familysearch.org
- **Federation of Family History Societies:** Long-established genealogy charity that supports ancestry research and family history societies around the world; bimonthly newsletter www.familyhistoryfederation.com/
- **Find a Grave:** Searchable database of graves www.findagrave.com
- **Findmypast.co.uk:** Online access to comprehensive collections of UK census, GRO indexes, parish registers, and much more: www.findmypast.co.uk £
- **Forces War Records:** Military genealogy resources plus military data www.forces-war-records.co.uk £
- **FreeBMD:** Search birth, marriage and death GRO index for England and Wales www.freebmd.org.uk
- **FreeCEN:** Search UK census data www.freecen.org.uk
- **FreeREG:** Indexed entries from many parish and non-conformist registers of England, Scotland and Wales www.freereg.org.uk
- **Gazetteer of British Place Names:** Place Name Index to Great Britain www.gazetteer.co.uk
- **Gazette, The:** Official Government notices, including wills, probate, civilian and military awards, insolvency, planning and transport notices www.thegazette.co.uk
- **Genealogist, The:** Online access to UK census, GRO indexes, parish registers, and much more: www.thegenealogist.co.uk £
- **General Register Office (GRO):** Order birth, marriage and death certificates online for a fee; free search birth and death indexes which include age at death and mothers' maiden name; [General Register Office - Online Ordering Service - Login \(gro.gov.uk\)](http://www.gro.gov.uk) £
- **Genes Reunited:** Online access to UK census, GRO indexes, parish registers, and much more: www.genesreunited.co.uk £
- **GENUKI:** Virtual reference library of genealogical information of particular relevance to the UK and Ireland; forthcoming genealogical events on GENEVA www.genuki.org.uk
- **Guild of One-name Studies:** Various online indexes, including marriage and probate <http://one-name.org/the-guild-indexes/>
- **Hathi Trust Digital Library:** Wide variety of collections including some nonconformist magazines. www.hathitrust.org/digital_library
- **Historical Directories** of England & Wales: Digital library of local / trade directories 1750–1919 <http://specialcollections.le.ac.uk/digital/collection/p16445coll4>
- **Imperial War Museums:** WWI/WWII collections plus access to *Faces of WWI & Lives of WWI* plus War Memorials Archive: <https://www.iwm.org.uk/>
- **Institute of Heraldic and Genealogical Studies:** School of Family History founded in 1961 www.ihgs.ac.uk
- **International Red Cross Archives - Prisoners of the First World War:** Index cards of 5 million service personnel and civilians captured in WWI and sent to detention

camps <https://grandeguerre.icrc.org/>

more/ >>>

- **Irish Genealogy Toolkit:** Free site with wiki and links to Irish resources www.irish-genealogy-toolkit.com/
- **London, Greater AIM25:** Provides access to catalogues of archives for higher-education institutions, learned societies, cultural organisations and livery companies <https://aim25.com/>
- **Long, Long Trail:** The British Army in the Great War of 1914–1918. Including where to find records and how to interpret them www.longlongtrail.co.uk
- **Lost Cousins:** Matches you with others researching the same ancestor www.lostcousins.com
- **Maps of all UK:** Hosted by National Library of Scotland, free: <https://maps.nls.uk/>
- **Measuring Worth:** Valuations of British money, from 1270 to present www.measuringworth.com/ppoweruk/
- **Military Service Records (UK):** How to obtain more recent service records including personnel who served in WWII www.gov.uk/get-copy-military-service-records
- **MyHeritage.com:** Online access to UK census, GRO indexes, parish registers, and much more:: www.myheritage.com £
- **National Archives of Ireland:** Census 1901 and 1911 and survivals 1821–51; tithe applotment books 1823–1837; soldiers' wills 1914–1917; calendars of wills and administrations 1858–1922 <https://genealogy.nationalarchives.ie/>
- **National Archives, The:** Resources to help you find UK records including topical research guides, catalogue, digitised records, collection of WWI letters, diaries, maps, etc.; www.nationalarchives.gov.uk/
- **National Library of Ireland:** Online searchable catalogue of holdings; plus online images of Catholic parish registers www.nli.ie
- **National Library of Scotland:** Scotland's legal deposit library; catalogue, Scots Abroad www.nls.uk
- **National Library of Wales:** Online catalogue of over 4 million entries; WW1 programme of remembrance www.library.wales
- **National Maritime Museum:** Over 1.5 million items relating to seafaring, navigation, astronomy and time measurement. Many available to view online www.rmg.co.uk/research-collections
- **National Railway Museum:** Free searchable database of over 20,000 railway employees, WWI, and more www.railwaymuseum.org.uk/research-and-archive
- **National Records of Scotland:** Research guides plus relevant links; also see Scotland's People www.nrscotland.gov.uk/research/family-history
- **Naval & Naval-History.net:** Royal Navy Log Books of the WW1 era; ship histories; WW1 casualty list information; Royal Navy despatches; Royal Navy honours and gallantry awards www.naval-history.net/#ww1
- **Naval Biographical Database:** People, places, ships, organisations and events associated with the Royal Navy since 1660 www.navylist.org
- **Old Bailey:** Proceedings at the court 1674–1913; nearly 200,000 London criminal trial records www.oldbaileyonline.org
- **Old Maps:** Historical maps of England, Wales and Scotland www.old-maps.co.uk

/more >>>

- **Online Genealogy Index (OGI)** - A simple and efficient way of finding genealogical data online <https://ogindex.org/>
- **Probate**: Access to post-1858 England and Wales wills; index of wills for soldiers who died on active service from 1860–1982 www.gov.uk/search-will-probate
- **Public Record Office of Northern Ireland**: Deposit for public records in Northern Ireland www.nidirect.gov.uk/proni
- **Railway Work, Life & Death**: Project exploring British and Irish railway worker accidents of the early 20th century www.railwayaccidents.port.ac.uk
- **Register of One-Place Studies**: Online studies of the history of particular places www.one-place-studies.org/
- **Roll of Honour**: War memorials from across the UK www.roll-of-honour.com
- **Rootschat**: Free genealogy discussion lists. www.rootschat.com/
- **Rootsweb's** help/discussion lists moved March 2020. Visit <https://groups.io/groups> then search for county or surname etc.
- **Royal Flying Corps 1914–1918**: Introduction to the history of The Royal Flying Corps and its aircraft during the First World War www.airwar1.org.uk
- **ScotlandsPeople**: BMD indexes; early parish registers; censuses 1841–1901; Scottish wills and testaments 1500–1901 www.scotlandspeople.gov.uk £
- **Scottish Archive Network**: Single electronic catalogue of more than 20,000 collections of historical records held by 52 Scottish archives www.scan.org.uk
- **Scottish Association of Family History Societies**: Find societies that have an interest in the same subject, surname or topic as you www.safhs.org.uk
- **Society of Genealogists**: The National Library and Education Centre for Family History; online search www.sog.org.uk
- **Theatrical Ancestors, Search For**: A large body of data to help you find out more about your theatrical ancestors <https://ellenterryarchive.essex.ac.uk/star>
- **Trove** (National Library of Australia): Australian online resources - books, images, historic newspapers, maps, music, archives and more <https://trove.nla.gov.au/>
- **University Research Libraries (COPAC)**: Merged catalogues of 24 research libraries in the UK and Ireland, plus others <https://discover.libraryhub.jisc.ac.uk/>
- **UKBMD Project**: Family history society initiative to publish local registrars' indexes online www.ukbmd.org.uk
- **Victoria County History (VCH)** Online access: www.history.ac.uk/research/victoria-county-history
- **War Graves Photographic Project**: Free searchable database; photographs of graves or memorials available for a minimum donation www.twgpp.org
- **War Memorials Online**: Creating the UK's most comprehensive understanding of the condition of war memorials; some images: www.warmemorialsonline.org.uk
- **Western Front Association (WFA)**: Aims to perpetuate the memory, courage and comradeship of all those on all sides who served their countries in France and Flanders and their own countries during The Great War www.westernfrontassociation.com
- **Workhouses**: Dedicated to the workhouses of Britain; buildings, inmates, staff and administrators, even poets www.workhouses.org



FAMILY HISTORY BOOKS^{ONLINE}

formerly THE FAMILY HISTORY PARTNERSHIP



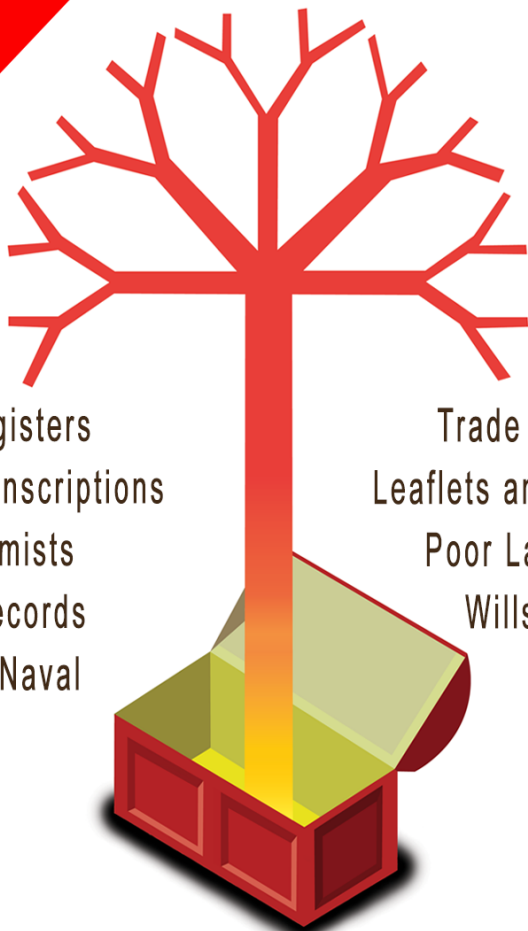
www.familyhistorybooksonline.co.uk

www.parishchest.com

www.familyhistoryfederation.com

FAMILY HISTORY FEDERATION

NEW



Parish Registers
Memorial Inscriptions
Nonconformists
Census Records
Military & Naval

Trade Directories
Leaflets and Booklets
Poor Law Records
Wills & Probate
Old Maps

PARISH CHEST™

Family History Research Aids from the Experts



www.parishchest.com
www.familyhistorybooksonline.co.uk
www.familyhistoryfederation.com
FAMILY HISTORY FEDERATION